

## CHAD IQps™

### AFFORDABLE CIRCUIT ASSEMBLY

The IQps™ is a low-cost automation platform that offers an ideal solution for Odd Form Pick-and-Place and other Circuit Assembly Applications. Easy-to-use motion and vision controls provide excellent capability. Standard assembly tools provide great system flexibility. Fully configurable, the IQps™ is an excellent choice for standard and custom odd form applications.

# JABIL

The most technologically advanced and trusted manufacturing solutions provider

### PRODUCT FEATURES AND BENEFITS

- EPSON 4-axis SCARA Robot with motion controller.
- Simple-to-use IQware™ application software and intuitive operator interface, via Windows PC and manual control pendant.
- Edge belt conveyor with board stop and board locating tooling, as well as board support.
- Active or Programmable Lead clinch (optional).
- Quick-change feeder slots accept all standard part feeders. Options for 4, 6, or 10 feeders
- Compatible with standard CHAD Grippers, including standard mechanical and vacuum grippers, plus the CHAD PIE™ compliant gripper.
- Ability to handle virtually all component types, including axials, radials, pin headers, capacitors, connectors, transformers, relays, TO-220's, displays, LED's and more.
- Custom specifications can be accommodated.
- Full safety guarding (OSHA and ANSI compliant).

**IQps™ offers a fully configurable and affordable solution to handle a variety of assembly processes IQps™**

#### OPTIONS

- Active Clinch Heads
- Programmable Single Pin Clinch
- 3-Section Conveyor
- Auto-Width Conveyor
- Vision Board Location or Part Location
- Bar Code Reader
- Product Traceability Options

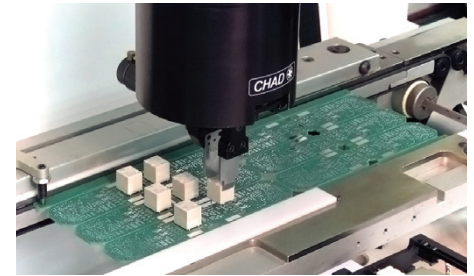
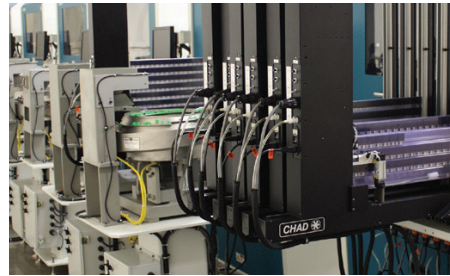
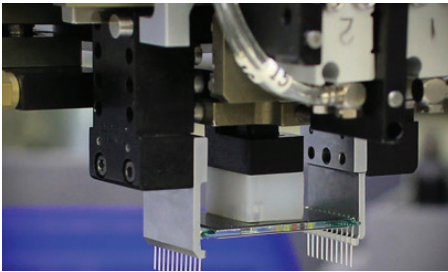
#### GRIPPERS

- CHAD SGE Single Grip End Effector (mechanical or vacuum)
- CHAD MGE Multi-Grip End Effector
- CHAD PIE 3D Compliant "Floating" Gripper

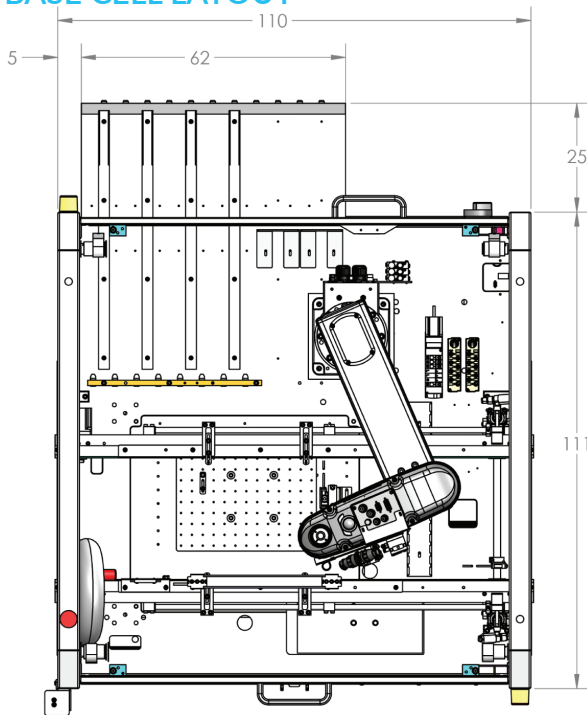
#### FEEDERS

- CHAD RC Radial Tape Feeder
- CHAD AF Axial Tape Feeder
- CHAD TM Tube Magazine Feeder
- CHAD Bowl & Inline Feeder
- CHAD Tray Feeder





**BASE CELL LAYOUT**



**SPECS**

Machine Footprint	1118 x 1600mm
Work Envelope	
- With Clinch Envelope	76 x 76mm to 356 x 240mm
- With Board Support	76 x 76mm to 356 x 254mm
Axes of Motion	4 axes (X, Y, Z, T)
Z Max. Stroke	180mm
Theta	360°
Manipular Payload	Rated 3kg, Max. 6 kg (on Z-Axis)
Manipulator Repeatability	
- X, Y, Z	±25µm
- T	±0.005°
Utility Requirements	
- Power	220VAC ±10%, 50/60Hz, 30 Amp
- Air	5.2-6.9 bar, 57 L/min
Product Presentation	Edge Belt Conveyor
Feeder Slots Available	4 Slots (6 and 10 slots optional)
Electrical I/O	
- User I/O	56 inputs / 48 Outputs
- Expansion I/O	27 Inputs / 20 Outputs (expandable by using stackable modules)
Pneumatic	14 Valves Wired
Connectivity	MES or Local Data Logging
Jabil IQware™	Visual Programming Environment
Controls	Advantech PC with Windows Epson RC-180 Motion Controller Epson Manual Control Pendant

**Jabil Precision Automation Solutions**

1565 S. Sinclair Street  
Anaheim, CA 92806

Phone: +1.714.938.0080  
www.jabil.com

For over 40 years, Jabil Precision Automation Solutions' unparalleled expertise in advanced automated assembly and precision alignment has helped the world's top companies efficiently manufacture the next generation of semiconductors, mobile and optical devices, and consumer electronics. For more information visit [www.jabil.com](http://www.jabil.com)